

PL2000 & PL2000 Plus

3D Wax Printer



The PLEMPIRE PL2000/PL2000 Plus wax printers are ideal for mass-producing jewelry with high precision and efficiency.

Using MultiJet Printing (MJP) technology, they print ultra-fine wax workpieces with a layer thickness of just 0.016mm. This results in excellent surface quality, fine details, and fast workflows, allowing large batch customization and direct casting to enhance production efficiency.

30% higher production rate on PL2000 Plus.

High Resolution

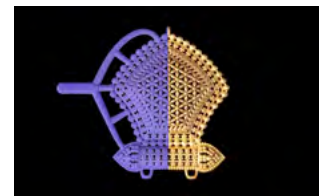
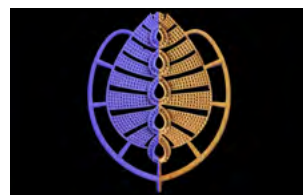
up to 1200 x 1200 x 1600 DPI, 16 μ layers

High Contrast

Deep purple(YHK601) molding wax
white support wax(YHK-102)

Simple Operation

Easy to learn



Product Specifications	PL2000	PL2000 Plus
Build volume (X Y Z)	294 x 212 x 150 mm	294 x 212 x 150 mm
Resolution (X Y Z)	1200 x 1200 x 1600 DPI, 16 μ layers	1200 x 1200 x 1600 DPI, 16 μ layers
Accuracy	\pm 0.1016 mm per 25.4 mm part dimension	\pm 0.1016 mm per 25.4 mm part dimension
Build Speed (mm/hr) in Z	1 lane : 5.08 mm/hr 2 Lane : 2.54 mm/hr 3 lane : 1.78 mm/hr	1 lane : 7.50 mm/hr 2 Lane : 3.50 mm/hr 3 lane : 2.40 mm/hr
Build Speed (hr/mm) in Z	1 lane : 0.19 hr/mm 2 Lane : 0.39 hr/mm 3 lane : 0.59 hr/mm	1 lane : 0.13 hr/mm 2 Lane : 0.29 hr/mm 3 lane : 0.42 hr/mm
File format	STL, SLC, OBJ, AMF, MJPDDD	STL, SLC, OBJ, AMF, MJPDDD
Material package	1.17 kg build, 1.3 kg support bottles: maximum machine capacity - 2 builds & 2 bottles	1.2 kg build, 1.35 kg support bottles: maximum machine capacity - 2 builds & 2 bottles
Dimensions (W x D x H)	1200 x 790 x 1165 mm	1272 x 780 x 1210 mm
Weight	Net: 350 kg, Gross: 510 kg	Net: 350 kg, Gross: 510 kg
Voltage & Current	220 - 240 V AC, 50/60 Hz, 15A	220 - 240 V AC, 50/60 Hz, 15A
Input/Output	220 - 240 V AC, 50 Hz, 10 A Single C14 socket	220 - 240 V AC, 50 Hz, 10 A Single C14 socket



PL3000

3D Wax Printer

The PLEMPIRE PL3000 is an advanced 3D wax pattern printer for jewelry, featuring MultiJet Printing (MJP) technology for larger build volumes and faster batch printing. With layer thicknesses of 8µm, 16µm, or 32µm, it produces ultra-fine, high-precision wax models with sharp edges and crisp details. Its high resolution and accuracy deliver excellent surface quality, reducing finishing and polishing labor. Ideal for mass customization, the PL3000 enhances casting efficiency and shortens product launch cycles.

3 Print Heads

Increased production volume

Large Build Volume

W 294 x D 212 x H 150 mm

High Resolution

up to 1200 x 1200 x 1600 DPI, 16µ layers

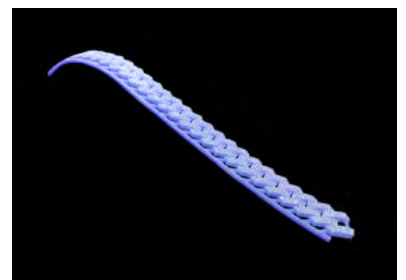
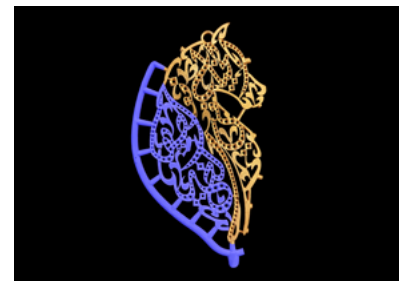
High Contrast

Deep purple(YHK601) molding wax
white support wax(YHK-102)

Simple Operation

Easy to learn

Product Specifications	PL3000
Build volume (X Y Z)	294 x 212 x 150 mm
Resolution (X Y Z)	1200 x 1200 x 1600 DPI, (3200dpi 8µ / 1600dpi 16µ / 800dpi 32µ)
Accuracy	±0.08 mm per 20 mm part dimension
Build Speed (mm/hr) in Z	7.6 mm/hr
File format	STL, SLC, OBJ
Material package	biuld 3kg/bottle, support 3.6kg/bottle
Dimensions (W x D x H)	1310 x 770 x 1670 mm
Weight	Net: 480 kg, Gross: 630 kg
Voltage & Current	220 - 240 V AC, 50/60 Hz, 15A
Input/Output	220 - 240 V AC, 50 Hz, 10 A Single C14 socket



Explore more
<https://www.harshad.com/plempire>