



# RapidShape S20

## Professional 3D Printer

The most economic professional printer suited for casting shops, design offices and jewellery companies.

With the compact and practical S20 printer, you have the ability to professionally yet easily convert any type of jewellery design into printed parts. As one of the fastest printers on the market, you can drastically shorten your lead time and also benefit from excellent service as well as the highest reliability and precision of print results.



Low Acquisition Cost



Professional Entry



Fine or Regular Versions available

- \* Certified auto calibration sensor
- \* Robust swivelling door
- \* HD resolution projector

- \* Remote control possible by TeamViewer
- \* Resin handling system
- \* 60000 hrs lifetime LED



Technical Specifications	S20
Building Area	133 x 75 mm
Native Pixel	± 30 µm
Max. Part Height	110 mm
Light Source	405 nm, HD resolution high power LED
Resolution	1920 x 1080 px
Dimensions (W x D x H)	335 x 541 x 349 mm
Connections	WLAN, TCP/IP, USB
Control	7" display, 3 button control
Recommended for	Highest demand in micropave design Highest demand in regular rings and stone settings and college rings



Explore more

<https://www.harshad.com/-3D-Printing-Rapidshape>

# RapidShape S30+

## Semi-automated 3D Printer

Fast, flexible and semi automated: The workhorse for casting shops, design offices and jewellery manufacturers.

Greater efficiency for professional print results – the S30+ ease of use and intuitive user interface allow fast, high volume print results with consistent quality. The optional automated part separation module (ASM, patents pending) enables cutting of parts without manual operation. Furthermore, the temperature-controlled resin reservoir provides process stability and improves part quality even more at maximum speed.



Optional:  
Automatic  
Separation  
Module (ASM)



User friendly



Designed  
for volume  
production



Fine, regular  
or large version  
available

- \* Large touch-screen
- \* Resin handling system (RHS)
- \* Remote control through TeamViewer®
- \* Resin temperature control
- \* Certified auto calibration (ACCS)
- \* Knowledge Center Access

Specifications	S30+ Large
Building Area	133 x 75 mm
Native Pixel	± 34.5 µm
Max. Part Height	150 mm
Light Source	405 nm, UV LED
Resolution	1920 x 1080 px
Dimensions (W x D x H)	335 x 541 x 349 mm
Connections	WLAN, TCP/IP, USB
Control	7" Touch Display, Touch Control
Recommended for	Larger pieces like bangles and statues with large surfaces



Explore more  
<https://www.harshad.com/-3D-Printing-Rapidshape>



# RapidShape S50+ For Professional Manufacturing

The S50+ is our new workhorse for printing any indication. With a print range three times larger than the S30+ and the optional, patented separation unit, you can catapult the number of pieces per day many times over.

Your printed parts are automatically separated from the build platform after printing is finished and collected in a big collection basket. The next print job is then started immediately, without manual intervention.

An Automated Refill unit ensures that there is always a sufficient level of printing material in the reservoir.



Automatic Separation Module (ASM)

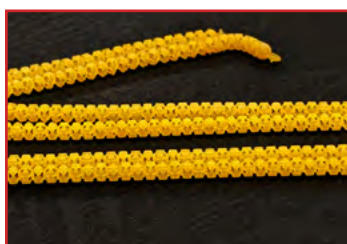


Automatic Resin Refill Unit



Open System

- \* Automatic Separation Module (ASM)\*
- \* Resin temperature control
- \* Automatic door opener
- \* Material identification (RFID)
- \* Certified auto calibration (ACCS)
- \* Integrated force feedback



Specifications	S50+ / S50+ ASM
Building Area	231 x 130 mm
Native Pixel	± 30 µm
Max. Part Height	300 mm (with ASM : 80 mm)
Light Source	405 nm LED
Resolution	4K
Dimensions (W x D x H)	600 x 570 x 1660 mm
Connections	WLAN, Ethernet, USB
Control	10" LCD display, touch-screen

\*Available both with and without Automatic Separation Module (ASM)

Explore more

<https://www.harshad.com/-3D-Printing-Rapidshape>





# RapidShape S90+ Standalone

A true industrial printer designed for 24/7 production under 100% load, whether for filigree or large jewellery designs.

The patented force feedback technology enables the highest production rate with the lowest production costs per part and without compromising quality. Modular high performance sub-systems including a dual-circuit cooling system with heat exchanger ensure optimal operation.



Industrial continuous manufacturing

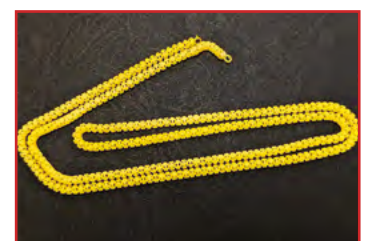


Lowest cost per parts

- \* Optional automatic resin refill
- \* Connection to process.net database system
- \* AC controlled interior for continuous use
- \* Remote control by TeamViewer®
- \* Certified auto calibration (ACCS)
- \* Web browser access

## S90+ Standalone

Building Area	231.5 x 137.3 mm
Native pixel	± 22.5 µm
Max. part height	125 mm
Light source	405 nm ultra high UV LED
Resolution	2560 x 1520 px
Dimensions (W x D x H)	443 x 625 x 1593 mm
Connections	TCP/IP, USB
Control	10" LCD display, touch control



Explore more  
<https://www.harshad.com/-3D-Printing-Rapidshape>



# RapidShape S90+ Cabinet

A true industrial printer designed for 24/7 production under 100% load, whether for filigree or large jewellery designs.

The patented force feedback technology enables the highest production rate with the lowest production costs per part and without compromising quality. Modular high performance sub-systems including a dual-circuit cooling system with heat exchanger ensure optimal operation.



Automatic Separation Module (ASM)

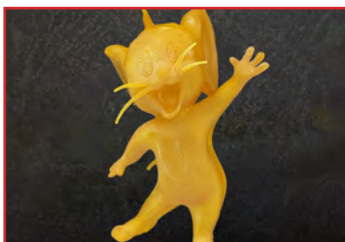


Optional with cabinet or conveyor belt



Industrial continuous manufacturing

- \* Automatic Separation Module (ASM)
- \* Optional automatic resin refill
- \* Ultra high 4K resolution projector
- \* Connection to process.net database system
- \* AC controlled interior for continuous use
- \* Remote control by TeamViewer®
- \* Certified auto calibration (ACCS)
- \* Web browser access



S90+ Standalone	
Building Area	232 x 137 mm
Native pixel	± 22.5 µm
Max. part height	80 mm
Light source	405 nm ultra high UV LED
Resolution	2560 x 1520 px
Dimensions (W x D x H)	625 x 800 x 1593 mm
Connections	TCP/IP, USB
Control	10" LCD display, touch control
Versions	Standalone Conveyor (Specifications on request)

Explore more

<https://www.harshad.com/-3D-Printing-Rapidshape>

