

Elettrolaser

LUXMARK S Series



The LUXMARK S Series laser markers are designed to achieve precise marking on small objects, delivering sharp and defined details even on geometrically complex pieces. With a versatile selection of interchangeable laser sources, the S Series provides comprehensive functionality.



Specifications

Power	Fiber	20W / 30W / 50W / 60W / NIB
	Green	3W / 5W / 7W
	UV	3W / 5W / 7W
Frequency	1 to 4000 khz in various modules depending on the application	
Focals	F100 (6 x 6 cm / 2.4"x 2.4") F160 (10 x 10 cm / 3.9"x 3.9") F210 (14 x 14cm / 5.5"x 5.5")	
Axes	2 : Z + R (Optional: X,Y)	
Axis travel	Z: 20 cm / 7.9"	
Working chamber dimensions	45 X 28,5 cm / 17.7"x 11.2"; Open door: 37 cm / 14.6"	
Max workpiece height	18 cm / 7.1" (F160)	
Machine dimensions	S: 48.2 x 74 x 70 cm / 19"x 29.1"x 27.6"	
	S OPEN: 48 x 73 x 64 cm - 19"x 28.7"x 25.2"	
Weight	S: 88 kg	
	S OPEN: 55 kg	
Operating environment	Temp : 10° - 35°C / Humidity: 30% - 80%	
Power supply	1P + N + PE, 230 Vac ± 10% ; 50/60 Hz; 0.8 - 1.2 KW	



Francesca

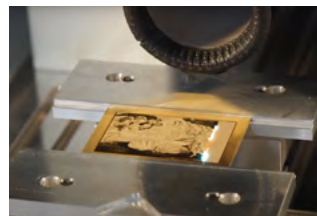
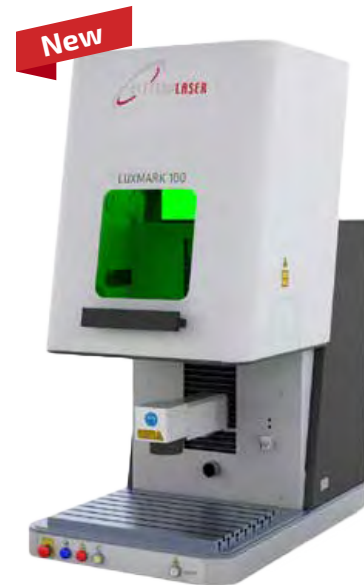


Elettrolaser

LUXMARK M & Top Series



The LUXMARK M and TOP series laser marking machines are engineered for versatile marking, deep engraving, and cutting applications, with options including a Picosecond laser. Their working chamber enables advanced 3D marking for complex shapes and 2.5D for detailed excavations. A wide range of compatible laser sources provides full adaptability to customer needs.



Specifications		
Power	Fiber	20W / 30W / 50W / 60W / 70W / 80W / 100W / 200W / MOPA / NIB / PICO
	Green	3W / 5W / 7W
	UV	3W / 5W / 7W
	CO ₂	10W / 30W / 60W / 100W
Frequency	1 to 4000 khz in various modules depending on the application	
Focals	F100 (6x6 cm); F160 (10x10 cm); F210 (14x14cm); F254 (17x17 cm); F330 (23x23 cm); F420 (28x28 cm) / 3D HEAD	
Laser guide for centering	Laser diode 650nm 2mw	
Axes	Z: 36 cm / 14.2"	
Working chamber dimensions	58 X 51 cm / 22.8"x 20.1" DOOR OPENING 45 cm/17.7" (automatic door: optional)	
Max workpiece height	37.5 cm / 14.8" (F160), 35 cm / 13.8" (3D)	
Machine dimensions	62 x 100 x 170 cm / 24.4"x 39.4"x 66.9"	
Weight	220 kg	
Power supply	1P + N + PE, 230 Vac ± 10% ; 50/60 Hz, 0.8 - 2 kW	

Elettrolaser

FiberLUX NANO



Equipped with a Ytterbium fiber optic laser source, the FiberLux NANO offers a marking power of 30W, compact footprint and a fully accessible working chamber.

Specifications	FiberLUX Nano 30
Output power	30 W
Wavelength	1064 nm
M2	<1.8
Power supply	230 V, 50-60Hz (optional 110 V) - 1kW
Working space dimensions	25 x 25 x 31 cm
Weight	35 kg
Focal 100 : marking area/spot	6 x 6 cm / 16 µm
Focal 160 : marking area/spot	10 x 10 cm / 26 µm
Speed of galvo head	5000 mm/s
Max. pulse energy	up to 1 mJ
Max. frequency	60 kHz
Cooling system	air cooled
Pulse duration	100 ns at 20 kHz
Laser class	IV



Accessories

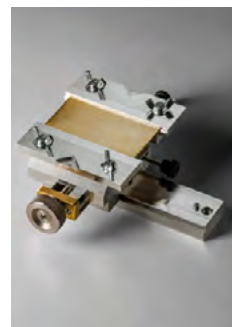
Marking & Cutting



Camera
For easier object positioning



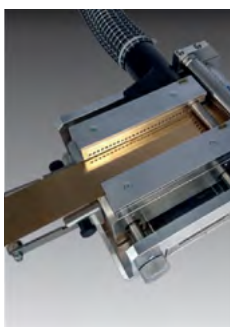
Self Centering Chuck (R - axis)
External & internal marking for rings and bracelets



XY Clamp
For manual positioning axis x/y



Dust Aspirator
To recover 99.9% of precious metals



Drag and Clamp Plate
For automatic cutting of objects



Automatic Door Open
For industrialization of production



Stand
Stand with PC support



Scanner Detection
Advanced piece position auto-detection system

Midas Laser Marking Machines

The Midas marker is a desktop laser engraving machine that provides the most economical solution that meets a wide range of production needs.

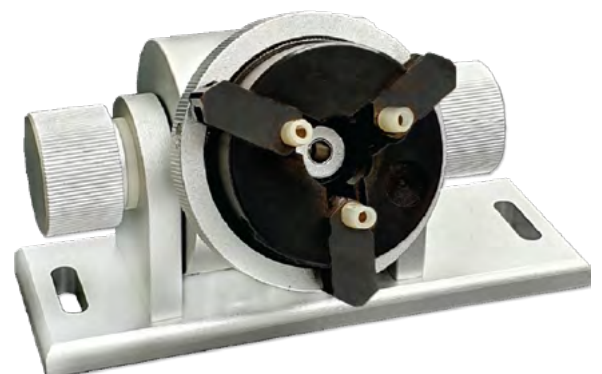
Vertical openings on all three sides provide easy access with a pass through option when needed. Long parts that won't fit in the cabinet are easily marked with 3 sides open.

The robust structure has a working table made of hard anodized aluminium with pre-drilled holes for fixture of parts quickly.



Technical Specifications

Laser source	Fiber laser
Laser power	20 W
Laser wavelength	1064 nm
Beam quality	1.2
Laser frequency	20 - 200 kHz
Laser lifespan	50000 hours (average)
Min. life width	0.02 mm
Min. character height	0.2 mm
Repeatability	0.001 mm
Marking table	X, Y and Z axis table
Marking depth	Up to 1.0 mm
Power supply	220 V, Single phase (Standard)
Weight	23 kg



Explore more
<https://www.harshad.com/midas-laser>

Midas Laser Cutter & Engraver

Midas laser machine is one kind of professional laser marking equipment which integrated light, machine & electricity. The key components are imported, our machine with advantages of novel style, unique structure, convenient operation, high frequency modulation, high marking speed and precision, stable performance, widely used in all kinds of metallic and non-metallic surface for permanent marker. Midas 50W is using the most advanced laser technology, optical fiber as medium, through absorbing or releasing energy from the laser, the galvanometer changing track and lens focused on the work piece surface, in accordance with the system pre-install path in work piece surface movement which in the process of evaporation vaporization, exposing deep mark.



Components of the laser machine:

- * Laser source
- * Laser scanner
- * F-theta lens
- * Control board & marking software
- * Computer
- * Lifting pillar
- * 2D working table
- * Power supply.

Technical Specifications

Laser source	Raycus (50W), JPT (80W, 100W, 200W)
Laser wavelength	1064 nm
Average output power	50 W, 80 W, 100 W
Pulse energy	1 mJ
Pulse width	90 - 150 ns
Modulation frequency range	50 ~ 100 kHz
Maximum linear speed	7000 mm/s
Resolution	12 μrad
Repeatability	8 μrad
Marking range	110 x 110 mm (optional)
Minimum line width	0.01 mm
Minimum character height	0.02 mm
Cooling method	Air cooling
Laser power	0.5K/AC 220V/50-60Hz (optional 110 V)
Light path lifting stroke	Movements itinerary 285 mm
Environment requirement	0 ~ 35 °C

