



# Silence 50L

## Mobile Workstation



Pocket filter



Filter bracket



ULPA filter



Membrane filter



### Technical Specifications

Power supply	AC 220-240V (100-120V), 50/60Hz, single phase
Motor RPM	32000 RPM
Air pressure	23.7 kPa (230 V); 25.2 kPa (120 V)
Air flow	3750 l/min (230 V); 3660 l/min (120 V)
Body materials	ABS, PP, PC
Output power	1251 W (230 V); 1247 W (120 V)
Current	5.2 A (230 V); 10 A (120 V)
Control panel	Suction level display, filter arm, vacuum motor
1st filter	Pocket filter
2nd filter	ULPA filter (99.9995 %)
3rd filter	Carbon filter
4th filter	Membrane filter
Noise level	Max. 55 dB
Suction level	1 - 9 steps
Motor operating temp.	0 - 40 C
Dimensions (Body)	W 295 x D 330 x H 750 mm



GA-10-L

- This device can be linked with micromotor controller.
- Filter replacement (cleaning) alarm by pneumatic sensor.





# Silence H1

## Desktop Dust Collector



Pocket filter



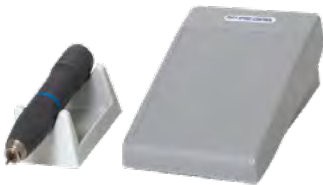
Filter bracket



UPLA filter



Membrane filter



Foot pedal



Hose



### Technical Specifications

Power supply	AC 220-240V (100-120V), 50/60Hz, single phase
Motor RPM	32000 RPM
Air pressure	23.7 kPa (230 V); 25.2 kPa (120 V)
Air flow	3750 L/min (230 V); 3660 L/min (120 V)
Output power	1251 W (230 V); 1247 W (120 V)
Current	5.2 A (230 V); 10 A (120 V)
Control panel	Suction level display, filter arm, vacuum motor
1st filter	Pocket filter
2nd filter	ULPA filter (99.9995 %)
4th filter	Membrane filter
Noise level	Max. 55 dB
Suction level	1 - 9 steps
Motor operating temp.	0 - 40 C
Dimensions (Body)	W 295 x D 330 x H 485 mm



Explore more  
<https://www.harshad.com/KO-MAX>

- This device can be linked with micromotor controller.
- Filter replacement (cleaning) alarm by pneumatic sensor.